

Pump monitoring and electronic motor protection



The MP 204 is capable of monitoring the operation of any pump. The MP 204 covers the range from 3 to 999 amps as well as voltages from 100 to 480 VAC and is easily set up in under two minutes. Gain insight into the operational characteristic of your pump, its current consumption and the stability of the electricity supply by following trend data in the system.

When the MP204 is monitored by Grundfos Remote Management, you get instant notification via SMS or email in the event of an alarm.

- One Grundfos CIU27x GPRS modem/data logger is capable of monitoring up to 10 pumps protected by MP204.
- The CIU27x will report on power failure and continue operation on a back-up battery.
- The CIU271 is capable of monitoring and logging data from pressure sensors, flow meters, alarm relays, and more.

MP204 and Grundfos Remote Management

– for low cost, feature-rich pump system monitoring

Grundfos Remote Management is an internet-based remote monitoring, management and reporting system for pump installations. It provides remote access to data and alarms from pumps, pump controllers and auxiliary equipment like sensors and meters. Data from pump installations is transferred to a central database and published to subscribers on a secure web server. Users have access to data from pump installations that are registered to their own account.



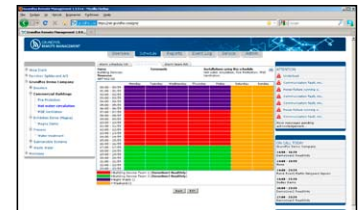
Complete overview
See the status of your entire system on a map or any digital image.



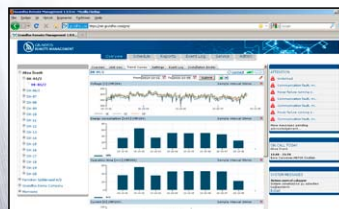
Share documentation
Upload system documentation to a secure server and make it accessible to all relevant personnel.



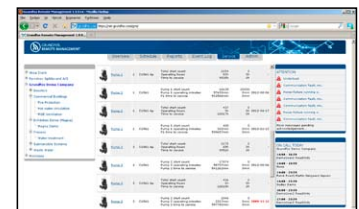
Online with your pumps
Live monitoring, analysis and adjustments from the comfort of your office.



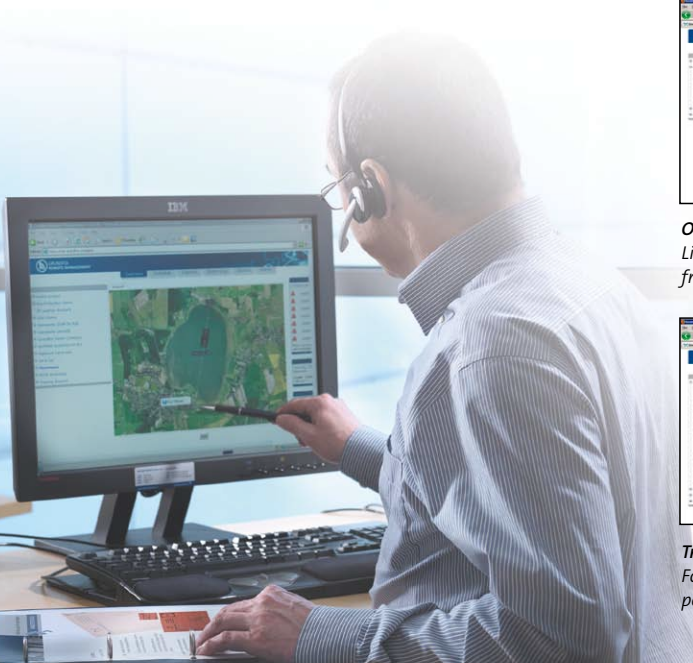
Flexible on-call schedule
Simple planning of who responds to SMS/email alarms in rotating weekly schedules.

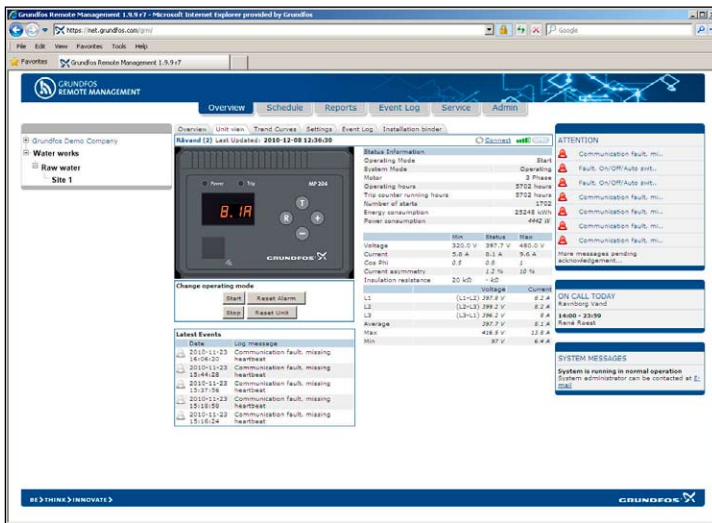


Trends and Reports
Follow system performance and reveal opportunities to reduce energy consumption.



Manage pump maintenance
Plan service work on the basis of actual operating data and get notification when service is due.





ALARMS AND WARNINGS

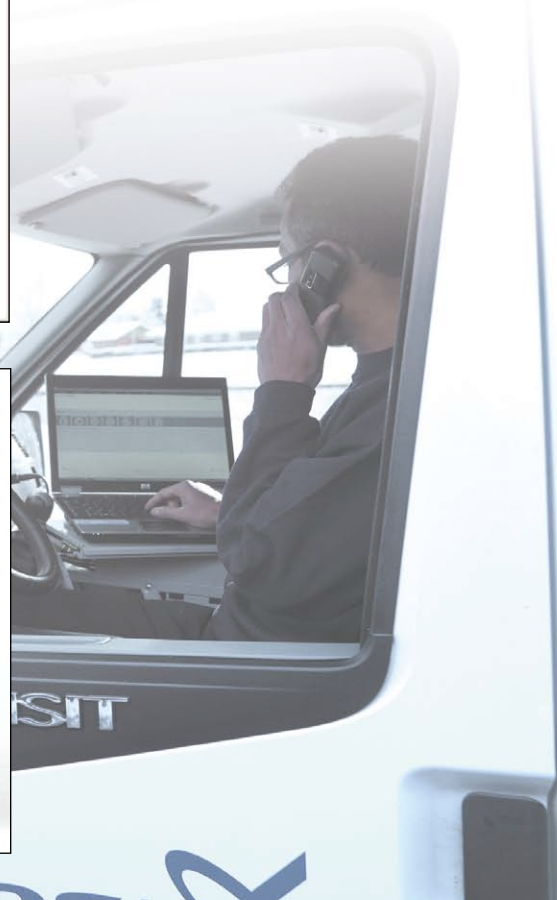
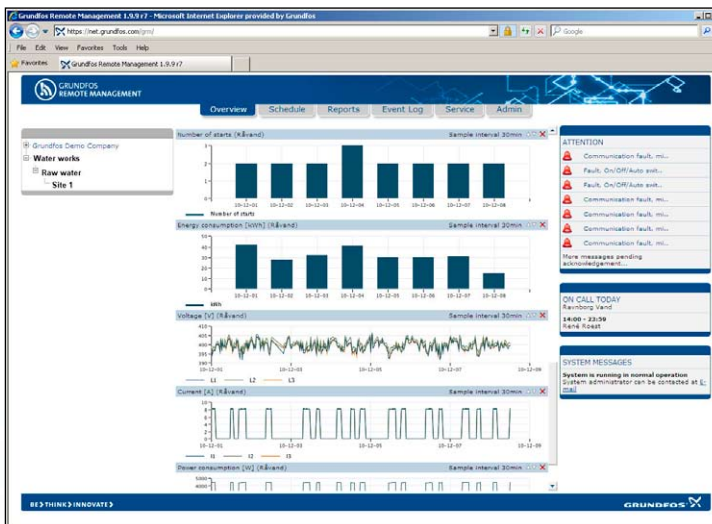
- Low insulation resistance
- High motor temperature
- Overload/underload
- Overvoltage/undervoltage
- Phase sequence reversal
- Too many restarts
- Phase missing
- Power factor high/low
- Harmonic distortion
- Run and start capacitor low

OPERATIONAL DATA

- Energy consumption
- Operation time
- Number of starts
- Current
- Voltage
- Power consumption

REMOTE CONTROL

- Pump down
- Alarm reset



97823067