

Complete insight in your wastewater network



Dedicated Controls is ideal for all wastewater pumping stations, allowing intelligent control of groups of up to six pumps. Features like automatic energy optimisation, preventive anti clogging functions and user-defined in- and outputs are standard. Take full advantage of the valuable data collected by your wastewater controllers and optimise your service and maintenance program for pumps, pipes and pits.

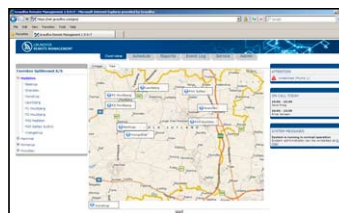
- Detect incoming rainwater
- Act on increased energy consumption
- Find pumps that are in need of service
- Find pits that are over or under dimensioned in terms of capacity

Using this data actively will help you plan and prioritise maintenance and new projects to meet the changing demands for your wastewater network.

Dedicated Controls and Grundfos Remote Management

– for low cost, feature-rich pump system monitoring

Grundfos Remote Management is an internet-based remote monitoring, management and reporting system for pump installations. It provides remote access to data and alarms from pumps, pump controllers and auxiliary equipment like sensors and meters. Data from pump installations is transferred to a central database and published to subscribers on a secure web server. Users have access to data from pump installations that are registered to their own account.



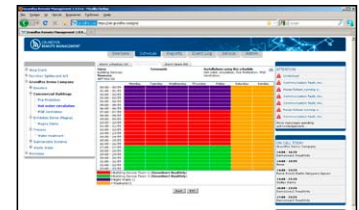
Complete overview
See the status of your entire system on a map or any digital image.



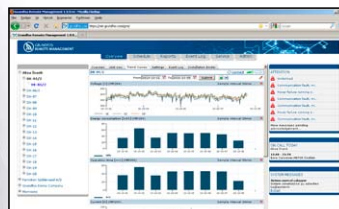
Share documentation
Upload system documentation to a secure server and make it accessible to all relevant personnel.



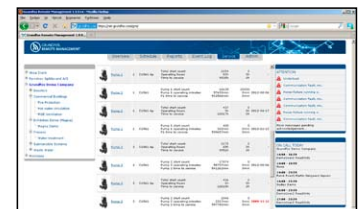
Online with your pumps
Live monitoring, analysis and adjustments from the comfort of your office.



Flexible on-call schedule
Simple planning of who responds to SMS/email alarms in rotating weekly schedules.

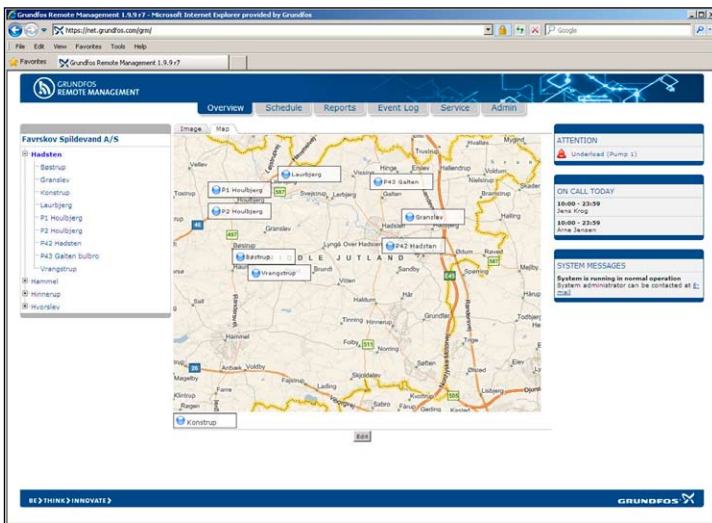


Trends and Reports
Follow system performance and reveal opportunities to reduce energy consumption.



Manage pump maintenance
Plan service work on the basis of actual operating data and get notification when service is due.





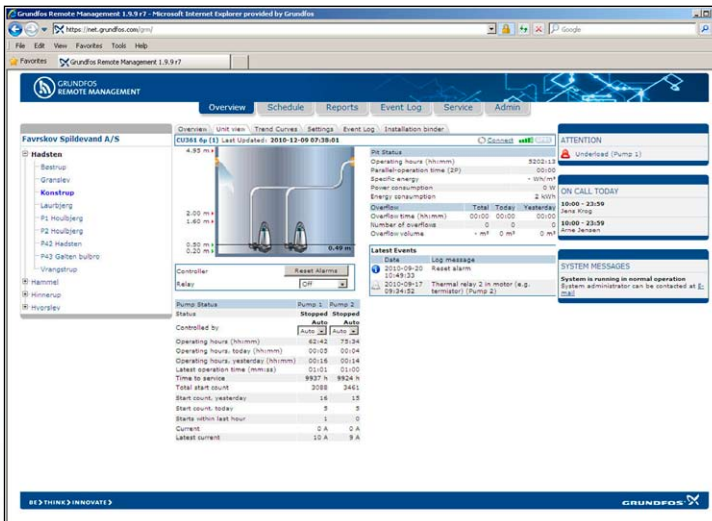
ALARMS AND WARNINGS

- Overflow
- High level
- Alarm level
- Dry running
- Bearing temperature high
- Motor temperature
- Overvoltage
- Undervoltage
- Overload
- Underload
- ...and many more.



OPERATIONAL DATA

- Pumped volume
- Energy consumption
- Specific energy
- Operation time
- Number of starts
- Parallel running time
- ...and more.



REMOTE CONTROL

- Manual operation (forced start)
- Alarm reset
- Adjust start, stop and alarm levels.

